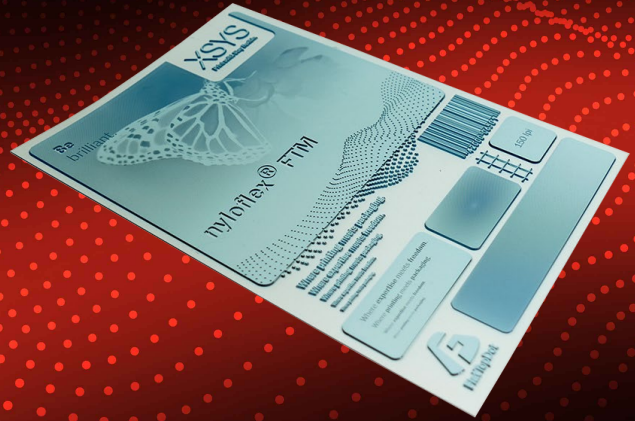




FlatTopDot



nyloflex® FTM Digital

The optimum choice for long high quality print runs with water based inks for aseptic and corrugated preprint



- + Medium hard inherent flat top dot flexographic printing plate with smooth plate surface for solvent plate processing.
- + Flat top dots with standard tube or a LED UV-A light exposure.
- + Developed especially for the corrugated preprint and aseptic market for use of water based inks.
- + The plate has dot sharpening in the highlights and is able to reproduce surface screenings.



Consistent print results

- + Superior ink lay down on different grades of paper substrates.
- + Better in highlights than most market common plates at the same solid ink density increasing shelf appeal for brand owners.
- + Inherent flat top dot technology ensures minimum dot wear resulting in less dot gain compared to round top dot plates.



Reduced costs and waste

- + Less plate waste thanks to better plate filling as jobs previously printed with nyloflex® ACE UP D or nyloflex® ACT D or similar plates can be combined on to one plate type.
- + Improving press up-time and thereby reducing costs and start-up waste through minimum dot wear resulting in less dot gain compared to round top dot plates.



Higher Sustainability

- + Fulfills brand owner sustainability requirements allowing printers to easily switch from printing on film to print on paper substrates with water based inks.

Be
Brilliant.

XSYS
Print solid. Stay flexible.

nyloflex® FTM Digital

The optimum choice for long high quality print runs with water based inks for aseptic and corrugated pre print

Technical characteristics	nyloflex® FTM Digital			
	114 D	170 D	254 D	284 D
Base Material	Polyester film			
Color of raw plate	Blue			
Total thickness (mm inch) ¹	1.14 0.045	1.70 0.67	2.54 0.100	2.84 0.112
Plate hardness (Shore A)	75	64	56	52
Recommended relief depth (mm)	0.5 – 0.7	0.6 – 0.9	0.9 – 1.2	0.9 – 1.2
Tonal range (%)	1 – 98	1 – 98	1 – 98	1 – 98
at screen ruling (l/cm)	60	60	60	60
Fine line width (down to µm)	50	50	50	50
Isolated dot diameter (down to µm)	100	120	150	150

Processing parameters²

Back exposure (s)	15 - 20	30 - 45	35 - 50	50 - 70
Main exposure (min)	8 - 10	8 - 10	8 - 10	8 - 10
Washout speed (mm/min)	200 - 260	200 - 230	170 - 190	135 - 180
Drying time at 60°C / 140°F (h)	1.5 - 2.0	2.0	2-3	2-3
Post exposure UV-A (min)	8	8	8	8
Post exposure UV-C (min) ³	1 - 2	1 - 2	1 - 2	1 - 2
Laser Energy (J/cm ²)	3.8	3.8	3.8	3.8
UVA bulb output (mW/cm ²)	≥17	≥17	≥17	≥17

Processing information

Suitable equipment	The nyloflex® FTM Digital can be processed with nyloflex® processing equipment and all similar devices and can be used with all laser systems suitable for imaging flexo printing plates.
Printing inks	Suitable for all water based printing inks (ethyl acetate content preferably below 15%, ketone content preferably below 5 %).
Washout solvents	Especially good results are achieved with nylosolv® washout solvents. nylosolv® can be distilled and reused.
Processing information	A detailed description of the imaging, exposure and finishing steps, as well as detailed information about handling and storing, can be found in the nyloflex® User Guide.
High quality standard	nyloflex® printing plates are manufactured according to DIN ISO 9001, DIN ISO 14001 and DIN ISO 50001 standards and requirements. This process guarantees our customers consistent high quality products and services.

1) Standard thicknesses currently available - subject to change 2) All processing parameters depend on, among other things, the processing equipment, lamp age and the type of washout solvent. A minimum exposure intensity of ≥ 17 mW/cm² is recommended. For exposure intensities higher than 20 mW/cm² finest vignettes, down to zero, can be easily reproduced. The above mentioned processing times were established under optimum conditions on nyloflex® processing equipment and using nylosolv® washout solvents. Under other conditions the processing times can differ from these; therefore, the above mentioned values are only to be used as a guide. 3) Depending on longevity of the tubes.

Please contact us for additional information.

info@xsyglobal.com • www.xsyglobal.com

The aim of our technical documents is to inform and advise our customers. The information provided herein is correct to the best of XSYS's knowledge. No liability for any errors, facts or opinions is accepted. Customers must satisfy themselves as to the suitability of this product for their application. No responsibility for any loss as a result of any person placing reliance on any material contained herein will be accepted. Product names followed by ® are trademarks registered by XSYS Germany GmbH and/or its affiliates.



XSYS
Print solid. Stay flexible.