

ThermoFlexX 20



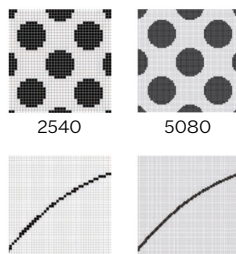
The ThermoFlexX 20 with its maximum plate size of 635 x 508 mm (25 x 20") is the perfect fit for the narrow web segment. It's an excellent choice for ambitious label printers who want their own productive imager and to remain independent whilst making plates in the shortest possible time. ThermoFlexX 20 is an ideal size to fit easily into available space with realistic costs for plate processing equipment and digital workflow.

High quality imaging

- + The new generation optical system offers superior quality thanks to a unique design using leading edge technology. The fiber laser represents today's best technology for digital imaging, offering superior quality. The robustly designed ThermoFlexX is made using heavy duty industrial components, making high speeds possible without fluctuation and vibrations. This provides the most accurate and consistent imaging quality available today.

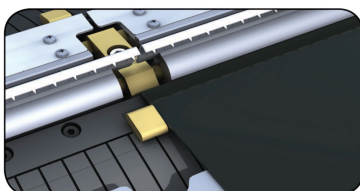
High Resolution

- + With 5080 dpi resolution, we push quality standards to a higher level.
- + smaller screen dots & finer details
- + sharper text and line-work
- + full image contrast
- + greater production stability through platemaking and printing



Vacuum Slider

- + Optimum plate handling and manipulation avoids accidental damage. The vacuum slider, a unique feature of ThermoFlexX imagers, offers efficient operation for partial plates. By moving the slider to the edge of the plate the vacuum is concentrated beneath the plate, which eliminates the need for taping and film covering and still allows full speed imaging.



Open

- + ThermoFlexX imagers excel in their choice of resolution. Any of the industry standards can be used. ThermoFlexX imagers can be integrated with any workflow or RIP that can produce 1-bit TIFF file format. Closed file formats such as LEN-files can be seamlessly converted to 1-bit TIFF. ThermoFlexX can image all digital plates, any brand, solvent, water washable or thermal processing, and is compatible with all plate making equipment.

Multi Resolution

- + ThermoFlexX supports all 1-bit TIFF formats from any RIP at all standard resolutions 2400, 2540, 4000, 4800, 5080 and 10.160 dpi. Closed file formats such as LEN files can be converted seamlessly to 1-bit TIFF format. In the Multiplate software, TIFF's with different resolution can be combined on one plate.

Convenient clamping

- + Operated by a pedal, the clamping system allows for seamless plate loading. While opening the clamps the drum is automatically locked for efficient positioning of the plate. A choice of clamps is available according to your plate material.

Multi Plate

- + MultiPlate is an intuitive interface providing amazing ease of use. 1-bit TIFF's are arranged automatically or manually and jobs of different resolutions can be combined. The status of different jobs is clearly presented. With the search and filter tool you can easily find files, even if they are stored in an archive.

ThermoFlexX 20

Technical characteristics	ThermoFlexX 20.2	ThermoFlexX 20.3
Laser type	Fiber laser 1064nm	
Laser power	20 W*	35 W*
Standard resolution ¹	2400 2540	2400 2540
High resolution ¹	4000* 4800* 5080*	4000* 4800* 5080*
Productivity 2400dpi ²	1m ² *	2m ² *
Productivity 5080dpi ²	1m ² *	2m ² *
Image quality	at 2540 dpi: up to 175lpi / at 5080 dpi: up to 250lpi	
Loading table	Top loading table	
Clamping system	Operated by a foot pedal	
Resolution change	Automatically	
Focus setting	Auto focus	
Plate loading	Manual	
Partial Plate handling	Vacuum Slider	
Maximum Plate sizes (drum dimensions)	635 x 508mm or 25" x 20" (width: 635 mm / circumference: 508 mm)	
Plate thickness	0.73 to 3.94mm 0.029 to 0.155"	
Mountable plate materials	Flexo plates and letterpress plates on polyester base Dry Films 0,2mm Digital Screens Gallus Screeny Optional: Metal back letterpress plates*	
Applications	Tag & Label Folding Carton	
Top & Bottom clamp space	15mm / 0.6"	
Machine dimensions	Width: 1112mm / 44" Depth: 871 / 35" Height: 1434mm / 57"	
Required Floor Space	3000 x 3000 mm 118"x 118"	
Weight	300 kg/ 661 lb	
Compressed Air	Not required	
Electrical connection	Voltage: 1x230 V (+/-5%) N, PE Frequency: 50 Hz- 60 Hz power consumption: 2.3 kVA plug: CEE 7/4"Shuko" Fuse: 12A	
Exhaust & Filter system	Internal filter system provided	
Vacuum system	Internal vacuum system provided	
Operating conditions	Humidity, max 70% Temperature 15-26° / 59-79 F/ (+/-2%)	
Multiplate Software Platform Specification	Windows 10 Professional Server 64 bit 3 Ghz Quad Core (4 cores with Hyperthreading) 16 GB RAM DVD ROM/ Minimum 1USB port for Dongle Dual 100/1000 Network Interface 1 TB hard disk	

1) By default one resolution (2400 or 2540dpi) comes with the imager. Additional resolutions are optional.

2) Depending on plate type and quality requirements. Thicker plates are imaged 60% of the mentioned productivity.

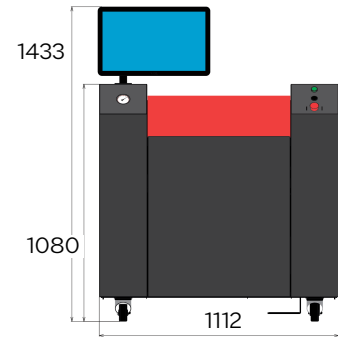
* Optional

Please contact us for additional information.

info@xsyglobal.com • www.xsyglobal.com

The aim of our technical documents is to inform and advise our customers. The information provided herein is correct to the best of XSYS's knowledge. No liability for any errors, facts or opinions is accepted. Customers must satisfy themselves as to the suitability of this product for their application. No responsibility for any loss as a result of any person placing reliance on any material contained herein will be accepted. Product names followed by ® are trademarks registered by XSYS Germany GmbH and/or its affiliates.

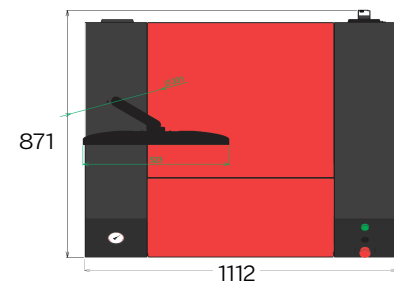
Front view



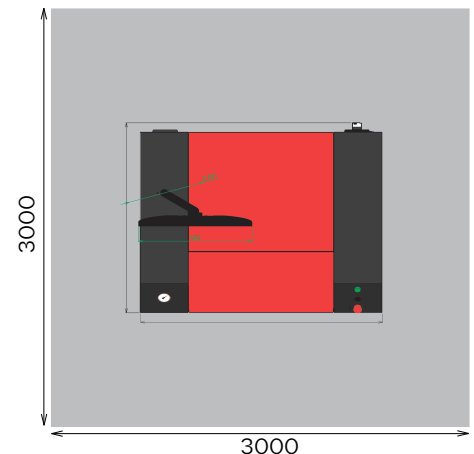
Side view



Plan view



Floor plan



XSYS

Print solid. Stay flexible.

04-2023